



株式会社C&Gシステムズ ファクトブック2020  
C&G SYSTEMS INC. Fact Book 2020

株式会社C&Gシステムズは、共に約40年以上の歴史を持つコンピュータエンジニアリング社およびグラフィックプロダクツ社を吸収合併してできた企業です。

C&Gシステムズは「世界を築く、創造のソリューション」をテーマに、高度化・多様化する金型製作の現場において、お客様一社々々のニーズや課題を発見し、的確かつ柔軟なソリューション提案によって、皆様のご期待にお応えしてまいります。また国内最大の金型ソリューションメーカーとして、金型モノづくり全体の最適化ソリューションをグローバルに展開し、お客様に更なるご満足をいただけるリーディング企業へと進化を遂げてまいります。

C&G SYSTEMS INC is the company merging COMPUTER ENGINEERING INC.(CE) and GRAPHIC PRODUCTS INC.(GP), with about 40 years of history each.

In the sophisticated and diversified mold making industry, C&G Systems achieves to locate every customer's needs/challenges, and also to provide an accurate and flexible solution that caters to customer expectation.

As the largest mold solution maker in Japan, we develop “the optimal solution” of mold manufacturing globally and to position ourselves into becoming a leading company to provide our customer full satisfaction.

## 目次 Contents

|   |       |
|---|-------|
| ■ 連結貸借対照表<br>Consolidated balance sheets  | 3     |
| ■ 連結貸借対照表の関連財務指標<br>Relevant financial indicators of consolidated balance sheets  | 4     |
| ■ 連結損益計算書<br>Consolidated statements of income  | 5     |
| ■ 連結損益計算書の関連財務指標<br>Relevant financial indicators of consolidated statements of income  | 6     |
| ■ 連結キャッシュ・フロー計算書<br>Consolidated statements of cash flows   | 7     |
| ■ 連結キャッシュ・フロー計算書の関連財務指標および1株当たり指標<br>Relevant financial indicators of consolidated statements of cash flows and consolidated per share data | 8     |
| ■ 連結株主資本変動計算書<br>Consolidated statements of changes in net assets   | 9     |
| ■ セグメント情報(仕向地別)<br>Consolidated segment sales performance ( By the place of destination)  | 10    |
| ■ 株式情報<br>Stock Information   | 11-12 |
| ■ 会社概要<br>Company Profile   | 13    |

| 連結貸借対照表<br>Consolidated balance sheets                       | Dec.31, 2016 | Dec.31, 2017 | Dec.31, 2018 | Dec.31, 2019 | Dec.31, 2020 |
|--|--------------|--------------|--------------|--------------|--------------|
| (資産の部) Assets  |              |              |              |              |              |
| 流動資産 Current assets  | 2,868,355    | 3,127,869    | 3,266,517    | 3,366,918    | 3,250,742    |
| 固定資産 Non current assets                                      | 1,431,050    | 1,686,136    | 1,673,072    | 1,666,832    | 1,721,034    |
| 有形固定資産 Tangible fixed assets                                 | 231,686      | 233,426      | 257,624      | 289,262      | 288,281      |
| 無形固定資産 Intangible fixed assets                               | 87,173       | 54,594       | 19,538       | 19,127       | 21,103       |
| 投資その他の資産 Investments   | 1,112,189    | 1,398,114    | 1,395,908    | 1,358,441    | 1,411,650    |
| 資産合計 total assets  | 4,299,405    | 4,814,005    | 4,939,589    | 5,033,750    | 4,971,777    |
| (負債の部) Liabilities   |              |              |              |              |              |
| 流動負債 Current liabilities                                     | 992,525      | 1,014,808    | 997,920      | 1,209,920    | 1,057,095    |
| 固定負債 Non current liabilities                                 | 980,370      | 1,063,996    | 1,241,157    | 1,200,952    | 1,294,846    |
| 負債合計 Total liabilities                                       | 1,972,896    | 2,078,804    | 2,239,077    | 2,410,872    | 2,351,941    |
| (純資産の部) Net assets   |              |              |              |              |              |
| 資本金 Capital Stock  | 500,000      | 500,000      | 500,000      | 500,000      | 500,000      |
| 資本剰余金 Additional paid-in capital                             | 125,000      | 125,000      | 125,000      | 125,000      | 125,000      |
| 利益剰余金 Retained earnings                                      | 1,617,129    | 2,022,751    | 2,016,436    | 2,099,914    | 2,064,352    |
| 自己株式 Treasury stock  | (86)         | (86)         | (86)         | (117,889)    | (117,889)    |
| 株主資本合計 Total shareholders' equity                            | 2,242,043    | 2,647,664    | 2,641,349    | 2,607,024    | 2,571,462    |
| その他有価証券評価差額金<br>Unrealized gain on holding equity securities | 8,904        | 29,195       | 9,679        | (43,559)     | 10,043       |
| 為替換算調整勘定<br>Foreign currency translation adjustments         | 17,214       | 15,027       | 9,280        | 14,395       | (2,029)      |
| 非支配株主持分 Non-controlling interests                            | 58,346       | 43,312       | 40,202       | 45,017       | 40,359       |
| 純資産合計 Total net assets                                       | 2,326,509    | 2,735,200    | 2,700,511    | 2,622,877    | 2,619,836    |
| 負債純資産合計<br>Total liabilities and net assets                  | 4,299,405    | 4,814,005    | 4,939,589    | 5,033,750    | 4,971,777    |

| 関連財務指標<br>Relevant financial indicators            | Dec.31, 2016 | Dec.31, 2017 | Dec.31, 2018 | Dec.31, 2019 | Dec.31, 2020 |
|--|--------------|--------------|--------------|--------------|--------------|
| 総資本当期純利益率 (%)<br>Return on assets (ROA)            | 5.8          | 11.1         | 2.5          | 3.6          | 1.2          |
| 自己資本利益率 (%)<br>Return on equity (ROE)              | 11.1         | 20.3         | 4.5          | 6.9          | 2.3          |
| 自己資本比率 (%)<br>Equity ratio                         | 52.8         | 55.9         | 53.9         | 51.2         | 51.9         |
| 流動比率 (%)<br>Current ratio                          | 289.0        | 308.2        | 327.6        | 278.3        | 307.5        |
| 総資本回転率 (回)<br>Total assets turnover (times)        | 1.05         | 0.90         | 0.83         | 0.84         | 0.74         |
| 有利子負債 (千円)<br>Interest-bearing debt (thousand yen) | —            | —            | 100,000      | 100,000      | 12,181(※1)   |
| デット・エクイティ・レシオ (倍)<br>Debt Equity ratio (times)     | —            | —            | 0.03         | 0.03         | 0.00         |

総資産当期純利益率 = 当期純利益 / 総資本(期首・期末平均)

自己資本利益率 = 当期純利益 / 株主資本

自己資本比率 = 株主資本 / 総資産

流動比率 = 流動資産 / 流動負債

総資本回転率(回) = 売上高 / 総資本(期首・期末平均)

デット・エクイティ・レシオ = 有利子負債 / 株主資本

Return on assets (ROA) = Profit attributable to owners of parent / Total assets (yearly average)

Return on equity (ROE) = Profit attributable to owners of parent / Shareholders' equity

Equity ratio = Shareholders' equity / Total assets

Current ratio = Current assets / Current liability

Total assets turnover (times) = Sales / Total assets (yearly average)

Debt equity ratio = Debt / Shareholders' equity

※1 借入は、当社連結子会社であるTritech International, LLCによる新型コロナウイルス感染拡大に伴う米国政府からの特別融資であります。

※2 当ページでは「親会社株主に帰属する当期純利益」を「当期純利益」と略して記載しております。

| 連結損益計算書<br>Consolidated statements<br>of Income                         | For the year<br>ended Dec.31,<br>2016 | For the year<br>ended Dec.31,<br>2017 | For the year<br>ended Dec.31,<br>2018 | For the year<br>ended Dec.31,<br>2019 | For the year<br>ended Dec.31,<br>2020 |
|---|---------------------------------------|---------------------------------------|---------------------------------------|---------------------------------------|---------------------------------------|
| 売上高 Net sales   | 4,445,393                             | 4,083,285                             | 4,066,778                             | 4,197,306                             | 3,684,797                             |
| 売上原価 Cost of goods sold   | 1,795,870                             | 1,548,472                             | 1,544,934                             | 1,553,280                             | 1,348,573                             |
| 売上総利益 Gross profit  | 2,649,522                             | 2,534,813                             | 2,521,843                             | 2,644,025                             | 2,336,224                             |
| 販売費および一般管理費<br>Selling, general and<br>administrative expenses          | 2,241,322                             | 2,205,963                             | 2,291,774                             | 2,334,557                             | 2,143,987                             |
| 営業利益 Operating income   | 408,200                               | 328,849                               | 230,068                               | 309,467                               | 192,236                               |
| 営業外収益 Other income  | 100,676                               | 113,026                               | 98,725                                | 98,057                                | 112,425                               |
| 営業外費用 Other expenses  | 70,171                                | 68,238                                | 76,007                                | 77,755                                | 148,969                               |
| 経常利益 Ordinary income  | 438,705                               | 373,636                               | 252,786                               | 329,769                               | 155,692                               |
| 特別利益 Extraordinary income   | —                                     | 62,122                                | —                                     | —                                     | —                                     |
| 特別損失 Extraordinary losses   | —                                     | —                                     | 15,600                                | —                                     | —                                     |
| 税金等調整前当期純利益<br>Net income<br>before income taxes and minority interests | 438,705                               | 435,759                               | 237,186                               | 329,769                               | 155,692                               |
| 親会社株主に帰属する当期純利益<br>Profit attributable to owners of parent              | 242,883                               | 503,635                               | 121,102                               | 181,491                               | 60,451                                |

| 関連財務指標<br>Relevant financial indicators                                   | For the year ended<br>Dec.31, 2016 | For the year ended<br>Dec.31, 2017 | For the year ended<br>Dec.31, 2018 | For the year ended<br>Dec.31, 2019 | For the year ended<br>Dec.31, 2020 |
|---|------------------------------------|------------------------------------|------------------------------------|------------------------------------|------------------------------------|
| 売上原価率 (%)<br>Cost of sales ratio  | 40.4                               | 37.9                               | 38.0                               | 37.0                               | 36.6                               |
| 売上高営業利益率 (%)<br>Operating profit ratio                                    | 9.2                                | 8.1                                | 5.7                                | 7.4                                | 5.2                                |
| 売上高経常利益率 (%)<br>Ordinary income ratio                                     | 9.9                                | 9.2                                | 6.2                                | 7.9                                | 4.2                                |
| 売上高当期純利益率 (%)<br>Return on sales  | 5.5                                | 12.3                               | 3.0                                | 4.3                                | 1.6                                |
| 従業員1人当たり売上高 (千円)<br>Net sales per employee<br>(thousand yen)              | 18,997                             | 16,943                             | 16,599                             | 16,924                             | 15,101                             |
| 従業員1人当たり営業利益 (千円)<br>Operating profit per employee<br>(thousand yen)      | 1,744                              | 1,364                              | 939                                | 1,247                              | 787                                |
| EBITDA<br>Earnings Before Interest Taxes<br>Depreciation and Amortization | 538,143                            | 559,103                            | 311,367                            | 381,923                            | 208,046                            |

売上原価率 = 売上原価 / 売上高

売上高営業利益率 = 営業利益 / 売上高

売上高経常利益率 = 経常利益 / 売上高

売上高当期純利益率 = 当期純利益 / 売上高

一人当たり売上高 = 売上高 / 従業員数

一人当たり営業利益 = 営業利益 / 従業員数

EBITDA = 税金等調整前当期純利益 + 支払利息 + 減価償却費

Cost of sales ratio = Costs of good sold / net sales

Operating profit ratio = operating profit / net sales

Ordinary income ratio = ordinary income / net sales

Return on sales = Profit attributable to owners of parent / net sales

Net sales per employee = net sales / total number of employees

Operating profit per employee = Operating profit / total number of employees

EBITDA = Pretax profit of the current term + Interest cost + depreciation and amortization

※ 当ページでは「親会社株主に帰属する当期純利益」を「当期純利益」と略して記載しております。

| 連結キャッシュ・フロー計算書<br>Consolidated statements of Cash Flows                                 | For the year ended<br>Dec.31, 2016 | For the year ended<br>Dec.31, 2017 | For the year ended<br>Dec.31, 2018 | For the year ended<br>Dec.31, 2019 | For the year ended<br>Dec.31, 2020 |
|---|------------------------------------|------------------------------------|------------------------------------|------------------------------------|------------------------------------|
| 営業活動によるキャッシュ・フロー<br>Net cash provided by (used in) operating activities                 | 531,180                            | 534,089                            | 163,251                            | 363,691                            | 492,633                            |
| 投資活動によるキャッシュ・フロー<br>Net cash provided by (used in) investing activities                 | (57,723)                           | (86,296)                           | (70,536)                           | (88,911)                           | (11,368)                           |
| 財務活動によるキャッシュ・フロー<br>Net cash provided by (used in) financing activities                 | (126,891)                          | (131,153)                          | (44,667)                           | (241,427)                          | (209,681)                          |
| 現金及び現金同等物に係る<br>換算差額<br>Effect of exchange rate changes<br>on cash and cash equivalents | (14,852)                           | (8,262)                            | (8,479)                            | (110)                              | (12,957)                           |
| 現金及び<br>現金同等物の増減額<br>Net increase(decrease)<br>in cash and cash equivalents             | 331,711                            | 308,376                            | 39,567                             | 33,242                             | 258,626                            |
| 現金及び現金同等物期首残高<br>Cash and cash equivalents<br>at beginning of the year                  | 1,496,555                          | 1,828,267                          | 2,136,644                          | 2,176,212                          | 2,209,454                          |
| 現金及び現金同等物期末残高<br>Cash and cash equivalents<br>at end of the year                        | 1,828,267                          | 2,136,644                          | 2,176,212                          | 2,209,454                          | 2,468,081                          |

## 連結キャッシュ・フロー計算書の関連指標および1株当たり指標

### Relevant financial indicators of consolidated statements of Cash Flows and per share data

| 関連財務指標<br>Relevant financial indicators                          | For the year ended<br>Dec.31, 2016 | For the year ended<br>Dec.31, 2017 | For the year ended<br>Dec.31, 2018 | For the year ended<br>Dec.31, 2019 | For the year ended<br>Dec.31, 2020 |
|--|------------------------------------|------------------------------------|------------------------------------|------------------------------------|------------------------------------|
| キャッシュ・フロー対有利子負債比率(年)<br>Cash flows / interest-bearing debt ratio | 0.0                                | 0.0                                | 0.6                                | 0.3                                | 0.0                                |
| インタレスト・カバレッジ・レシオ(倍)<br>Interest coverage ratio (times)           | 1,533.9                            | 2,582.4                            | 759.3                              | 775.3                              | 1,255.8                            |

| 1株当たり指標<br>Consolidated per share data                   | For the year ended<br>Dec.31, 2016 | For the year ended<br>Dec.31, 2017 | For the year ended<br>Dec.31, 2018 | For the year ended<br>Dec.31, 2019 | For the year ended<br>Dec.31, 2020 |
|--|------------------------------------|------------------------------------|------------------------------------|------------------------------------|------------------------------------|
| 1株あたり当期純利益(円)<br>Earnings per Share (EPS)                | 24.78                              | 51.38                              | 12.36                              | 18.66                              | 6.36                               |
| 1株あたり純資産(円)<br>Book-value per Share (BPS)                | 231.41                             | 274.64                             | 271.42                             | 271.31                             | 271.48                             |
| 1株あたりキャッシュ・フロー(円)<br>Cash flow per share                 | 34.89                              | 63.95                              | 19.90                              | 24.54                              | 11.83                              |
| 株価収益率(倍)<br>Price earnings ratio (PER) (times)           | 15.82                              | 9.93                               | 21.93                              | 21.48                              | 48.88                              |
| 株価純資産倍率(倍)<br>Price book-value ratio (PBR) (times)       | 1.69                               | 1.86                               | 1.00                               | 1.48                               | 1.15                               |
| 株価キャッシュ・フロー倍率(倍)<br>Price cash flow ratio (PCFR) (times) | 11.24                              | 7.98                               | 13.62                              | 16.34                              | 26.29                              |

キャッシュ・フロー対有利子負債比率 = 有利子負債 / 営業キャッシュ・フロー

Cash flow / Interest-bearing debt ratio  
= Interest-bearing debt / Net cash flow from operating activities

インタレスト・カバレッジ・レシオ = 営業キャッシュ・フロー / 支払利息

Interest coverage ratio = Net cash flow from operating activities / interest expense

1株あたり当期純利益 = 当期純利益 / 期中平均株式数(自己株式を除く)

Earnings per share = Profit attributable to owners of parent / ending outstanding shares

1株あたり純資産

= (期末純資産 - 期首新株予約権 - 期首少数株主持分) / 期末発行済株式数(自己株式を除く)

Book-value per share

= (ending book-value - beginning share warrant - beginning minority equity) / ending outstanding shares

1株あたりキャッシュ・フロー = (当期純利益 + 減価償却費) / 期末発行済株式数(自己株式を除く)

Cash flow per share = (Net income + Depreciation and amortization) / ending outstanding shares

株価キャッシュ・フロー倍率(PCFR) = 期末株価 / 1株当たりキャッシュ・フロー

Per cash flow ratio (PCFR) = ending share price / Cash flow per share

※ 当ページでは「親会社株主に帰属する当期純利益」を「当期純利益」と略して記載しております。



## 連結株主資本等変動計算書 Consolidated statements of changes in net assets

(千円 / thousand yen)

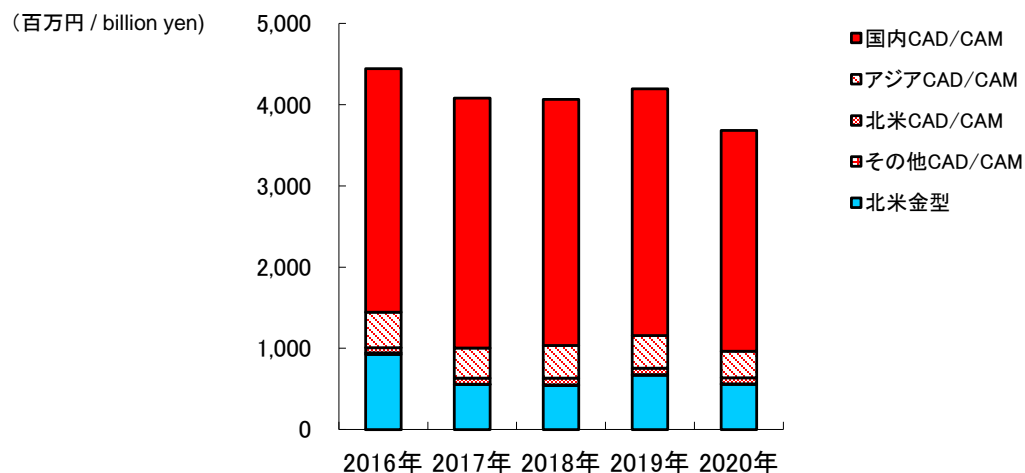
当連結会計年度(自2020年1月1日～至2020年12月31日) [Current period (From January 1, 2020 to December 31, 2020)]

|  | 株主資本<br>Owners' equity |  |                                   |                               |  | その他の包括利益累計額<br>Accumulated other comprehensive income                      |   |   | 非支配株主<br>持分<br>Non-controlling<br>interests | 純資産<br>合計<br>Total net<br>assets |
|--|------------------------|--|-----------------------------------|-------------------------------|--|--|---|---|---|----------------------------------|
|  | 資本金<br>Capital Stock   | 資本<br>剰余金<br>Additional paid-in<br>capital | 利益<br>剰余金<br>Retained<br>earnings | 自己<br>株式<br>Treasury<br>stock | 株主資本<br>合計<br>Total<br>shareholders'<br>equity | その他<br>有価証券<br>評価差額金<br>Unrealized gain on<br>holding equity<br>securities | 為替換算<br>調整勘定<br>Foreign<br>currency<br>translation<br>adjustments | その他の包<br>括利益累計<br>額合計<br>Total<br>accumulated<br>other<br>Comprehensive<br>Income |   |                                  |
| 2019年12月31日残高<br>Balance at December 31, 2018  | 500,000                | 125,000                                    | 2,099,914                         | (117,889)                     | 2,607,024                                      | (43,559)   | 14,395  | (29,164)  | 45,017                                      | 2,622,877                        |
| 当期変動額<br>Changes of items during the period  |                        |  |                                   |                               |  |  |   |   |   |                                  |
| 剰余金の配当<br>Dividends from surplus   |                        |  | (96,013)                          |                               | (96,013)                                       |  |   |   |   | (96,013)                         |
| 親会社株主に帰属する<br>当期純利益<br>Profit attributable<br>to owners of parent                        |                        |  | 60,451                            |                               | 60,451   |  |   |   |   | 60,451                           |
| 自己株式の取得<br>Purchase of treasury stock  |                        |  |                                   |                               |  |  |   |   |   |                                  |
| 株主資本以外の項目の連結<br>会計期間中の変動額(純額)<br>Net changes of items<br>other than shareholders' equity |                        |  |                                   |                               | —  | 53,603   | (16,425)  | 37,178  | (4,658)                                     | 32,520                           |
| 当期変動額合計<br>Total changes of<br>items during the period                                   | —                      | —  | (35,562)                          |                               | (35,562)                                       | 53,603   | (16,425)  | 37,178  | (4,658)                                     | (3,041)                          |
| 2020年12月31日残高<br>Balance at December 31, 2019  | 500,000                | 125,000                                    | 2,064,352                         | (117,889)                     | 2,571,462                                      | 10,043   | (2,029)   | 8,014   | 40,359                                      | 2,619,836                        |

# 連結セグメント売上：仕向地別 Consolidated basis segment sales performance (By the place of destination)

(千円 / thousand yen)

| 売上高<br>Sales                              | 2016                    |                  | 2017                    |                  | 2018                    |                  | 2019                    |                  | 2020                    |                  |
|---|-------------------------|------------------|-------------------------|------------------|-------------------------|------------------|-------------------------|------------------|-------------------------|------------------|
|   | 実績<br>Sales performance | 割合<br>Percentage | 実績<br>Sales performance | 割合<br>Percentage | 実績<br>Sales performance | 割合<br>Percentage | 実績<br>Sales performance | 割合<br>Percentage | 実績<br>Sales performance | 割合<br>Percentage |
| <b>CAD/CAM製品</b><br>CAD/CAM products      | 3,520,362               | 79.2%            | 3,528,508               | 86.4%            | 3,522,027               | 86.6%            | 3,527,168               | 84.0%            | 3,127,766               | 84.9%            |
| 国内<br>Domestic                            | 3,000,990               | 67.5%            | 3,076,632               | 75.3%            | 3,028,335               | 74.5%            | 3,040,284               | 72.4%            | 2,719,055               | 73.8%            |
| 北米<br>North America                       | 64,208                  | 1.4%             | 73,738                  | 1.8%             | 82,204                  | 2.0%             | 79,198                  | 1.9%             | 74,894                  | 2.0%             |
| アジア<br>Asia                               | 435,652                 | 9.8%             | 372,484                 | 9.1%             | 402,734                 | 9.9%             | 401,336                 | 9.6%             | 328,203                 | 8.9%             |
| その他<br>Other                              | 19,510                  | 0.4%             | 5,652                   | 0.1%             | 8,753                   | 0.2%             | 6,348                   | 0.2%             | 5,611                   | 0.2%             |
| <b>金型製造</b><br>Mold and die manufacturing | 925,031                 | 20.8%            | 554,776                 | 13.6%            | 544,750                 | 13.4%            | 670,137                 | 16.0%            | 557,031                 | 15.1%            |
| 北米<br>North America                       | 925,031                 | 20.8%            | 554,776                 | 13.6%            | 544,750                 | 13.4%            | 670,137                 | 16.0%            | 557,031                 | 15.1%            |
| <b>合計</b><br>Total sales                  | 4,445,393               |                  | 4,083,285               |                  | 4,066,778               |                  | 4,197,306               |                  | 3,684,797               |                  |



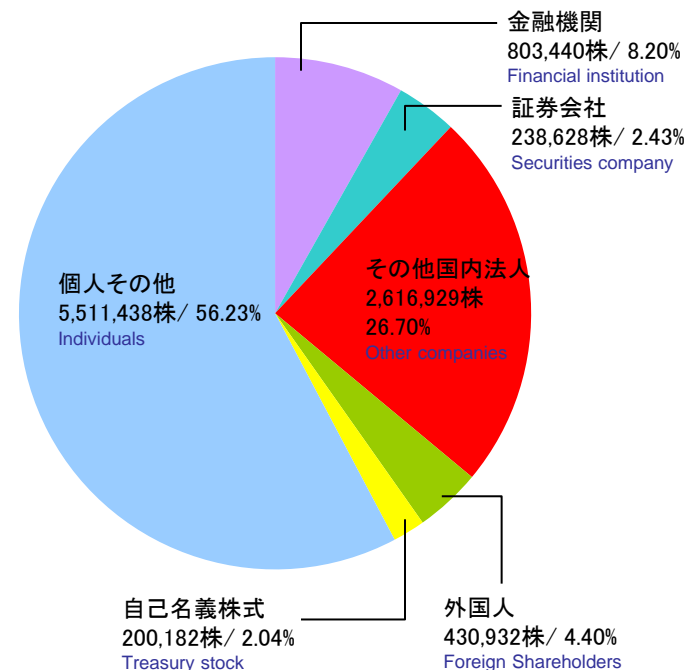
株主メモ (2020年12月31日現在) General information (As of December 31st, 2020)

|   |   |
|---|---|
| 決算期 Fiscal year-end                             | 毎年12月31日 December 31  |
| 定時株主総会開催期 Month of annual shareholder's meeting | 3月 March  |
| 配当金受領株主確定日 Ex-dividened date                    | 毎年12月31日 December 31  |
| 株主名簿管理人及び特別口座の口座管理機関 Transfer agent             | 三井住友信託銀行 / 〒100-0005 東京都千代田区丸の内一丁目4番1号<br>Sumitomo Mitsui Trust Bank, Limited. / 1-4-1 Marunouchi, Chiyoda-ku, 100-0005, Tokyo  |
| 株主名簿管理人 事務取扱場所 Register                         | 三井住友信託銀行 証券代行部 / 〒100-0005 東京都千代田区丸の内一丁目4番1号<br>Sumitomo Mitsui Trust Bank, Limited. / Stock transfer agency department 1-4-1 Marunouchi, Chiyoda-ku, 100-0005, Tokyo |
| 株式総数 Authorized shares                          | 48,000,000株   |
| 発行済株式総数 Shares issued and outstanding           | 9,801,549株  |
| 1単元の株式数 Number of unit stocks                   | 100株  |
| 上場証券取引所 Securities exchange                     | 東京証券取引所 市場第二部 (証券コード:6633) Tokyo Stock Exchange 2nd Section (6633)  |
| 株主数 Number of shareholders                      | 3,949名  |

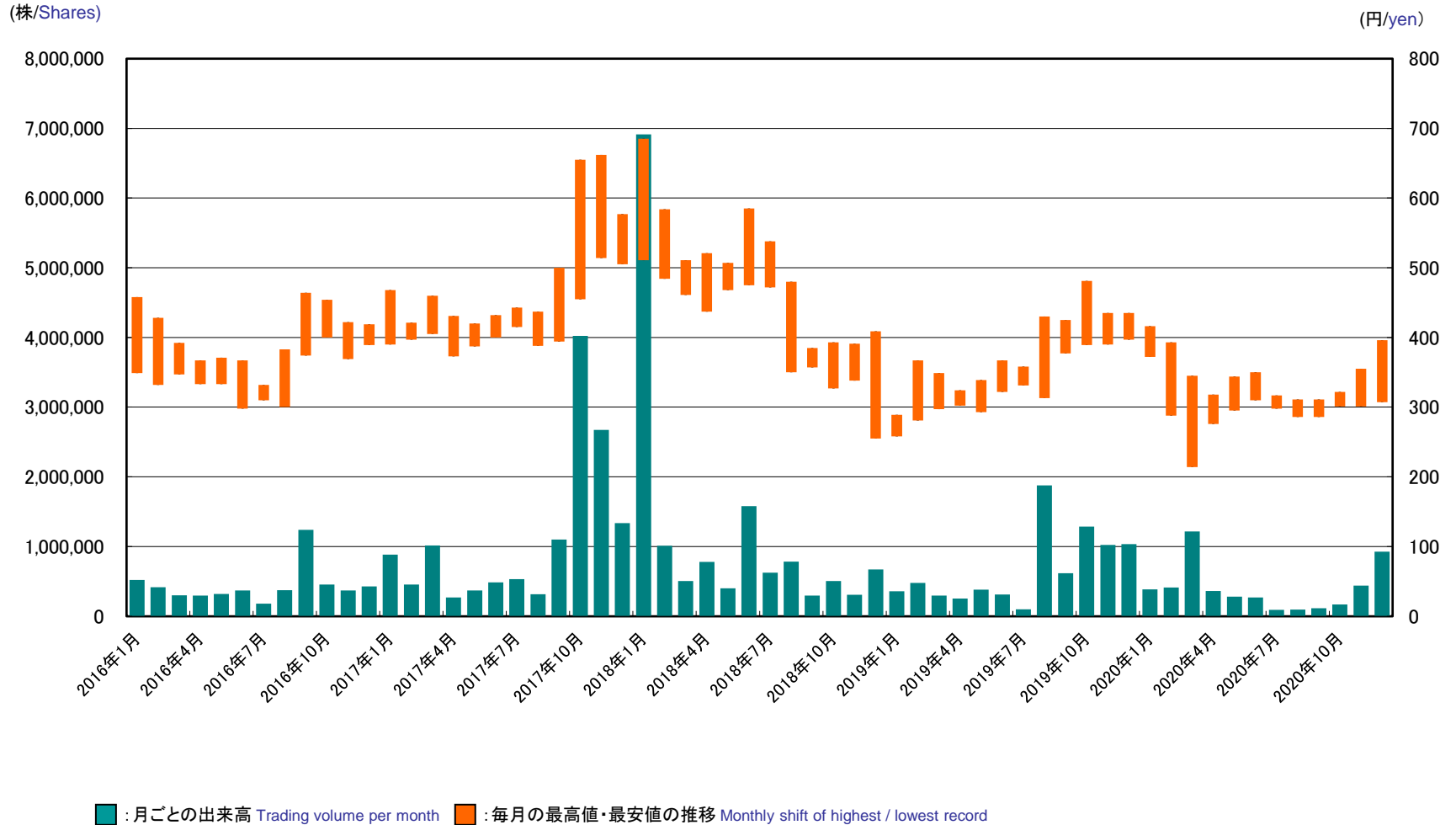
大株主 (2020年12月31日現在) Principal shareholder (As of December 31st, 2020)

| 株主名 Name                                 | 当社株式への出資状況<br>Investment in C&G SYSTEMS INC. |                          |
|--|--|--------------------------|
|  | 所有株式数<br>Number of share                     | 議決権比率<br>Ratio of Voting |
| 株式会社山口クリエイト YAMAGUCHI CREATE CO.,LTD.    | 1,672,190                                    | 17.42%                   |
| 日本生命保険相互会社 Nippon Life Insurance Company | 459,740                                      | 4.79%                    |
| 光通信株式会社 Hikari Tsushin K.K.              | 316,700                                      | 3.30%                    |
| 山口 修司 Shuji Yamaguchi                    | 293,169                                      | 3.05%                    |
| リズム株式会社 Rhythm Co.                       | 210,100                                      | 2.19%                    |
| 従業員持株会 Employee Holding Association      | 208,969                                      | 2.18%                    |
| THE BANK OF NEW YORK MELLON 140040       | 189,500                                      | 1.97%                    |
| 株式会社ナガワ Nagawa Co.,Ltd                   | 121,200                                      | 1.26%                    |
| THE BANK OF NEW YORK MELLON 140042       | 115,400                                      | 1.20%                    |
| 小栗 恵一 Keiichi Oguri                      | 114,800                                      | 1.20%                    |

※当社は、自己株式200,182株を保有しておりますが、上記大株主からは除外しております。  
C&G SYSTEMS INC. has 200,182 stocks as a treasury stock, but they are pulled from above list.



株価の推移 Transition of share price



## 会社概要 Company Profile

|   |  |  |       |                            |         |       |                            |       |       |                                     |     |       |                              |     |       |                             |     |       |                             |       |      |   |              |       |  |              |      |  |
|---|--|--|-------|----------------------------|---------|-------|----------------------------|-------|-------|-------------------------------------|-----|-------|------------------------------|-----|-------|-----------------------------|-----|-------|-----------------------------|-------|------|---|--------------|-------|--|--------------|------|--|
| 会社名<br>Company name                       | 株式会社C&Gシステムズ C&G SYSTEMS INC.  |  |       |                            |         |       |                            |       |       |                                     |     |       |                              |     |       |                             |     |       |                             |       |      |   |              |       |  |              |      |  |
| 設立年月日<br>Founded                          | 2007年7月 July 2007  |  |       |                            |         |       |                            |       |       |                                     |     |       |                              |     |       |                             |     |       |                             |       |      |   |              |       |  |              |      |  |
| 資本金<br>Capital                            | 5億円 500 million yen  |  |       |                            |         |       |                            |       |       |                                     |     |       |                              |     |       |                             |     |       |                             |       |      |   |              |       |  |              |      |  |
| 連結従業員数<br>Consolidated number of employee | 244名(2020年12月末現在) 244(December 31th, 2020)   |  |       |                            |         |       |                            |       |       |                                     |     |       |                              |     |       |                             |     |       |                             |       |      |   |              |       |  |              |      |  |
| 役員<br>Senior Management                   | <table border="0"> <tr> <td>代表取締役会長</td> <td>山口 修司</td> <td>Chairman / Shuji Yamaguchi</td> </tr> <tr> <td>代表取締役社長</td> <td>塩田 聖一</td> <td>President / Seiichi Shiota</td> </tr> <tr> <td>常務取締役</td> <td>伴野 裕之</td> <td>Managing director / Hiroyuki Tomono</td> </tr> <tr> <td>取締役</td> <td>寺崎 和彦</td> <td>Director / Kazuhiko Terasaki</td> </tr> <tr> <td>取締役</td> <td>春日 勝人</td> <td>Director / Katsuhito Kasuga</td> </tr> <tr> <td>取締役</td> <td>小島 利幸</td> <td>Director / Toshiyuki Kojima</td> </tr> <tr> <td>監査等委員</td> <td>佐藤 淳</td> <td>Director and Member of the Audit and Supervisory Committee / Atsushi Sato</td> </tr> <tr> <td>監査等委員(社外取締役)</td> <td>山田 英雄</td> <td>External Director and Member of the Audit and Supervisory Committee / Hideo Yamada</td> </tr> <tr> <td>監査等委員(社外取締役)</td> <td>橋本 光</td> <td>External Director and Member of the Audit and Supervisory Committee / Hikaru Hashimoto</td> </tr> </table> | 代表取締役会長  | 山口 修司 | Chairman / Shuji Yamaguchi | 代表取締役社長 | 塩田 聖一 | President / Seiichi Shiota | 常務取締役 | 伴野 裕之 | Managing director / Hiroyuki Tomono | 取締役 | 寺崎 和彦 | Director / Kazuhiko Terasaki | 取締役 | 春日 勝人 | Director / Katsuhito Kasuga | 取締役 | 小島 利幸 | Director / Toshiyuki Kojima | 監査等委員 | 佐藤 淳 | Director and Member of the Audit and Supervisory Committee / Atsushi Sato | 監査等委員(社外取締役) | 山田 英雄 | External Director and Member of the Audit and Supervisory Committee / Hideo Yamada | 監査等委員(社外取締役) | 橋本 光 | External Director and Member of the Audit and Supervisory Committee / Hikaru Hashimoto |
| 代表取締役会長                                   | 山口 修司  | Chairman / Shuji Yamaguchi   |       |                            |         |       |                            |       |       |                                     |     |       |                              |     |       |                             |     |       |                             |       |      |   |              |       |  |              |      |  |
| 代表取締役社長                                   | 塩田 聖一  | President / Seiichi Shiota   |       |                            |         |       |                            |       |       |                                     |     |       |                              |     |       |                             |     |       |                             |       |      |   |              |       |  |              |      |  |
| 常務取締役                                     | 伴野 裕之  | Managing director / Hiroyuki Tomono  |       |                            |         |       |                            |       |       |                                     |     |       |                              |     |       |                             |     |       |                             |       |      |   |              |       |  |              |      |  |
| 取締役                                       | 寺崎 和彦  | Director / Kazuhiko Terasaki   |       |                            |         |       |                            |       |       |                                     |     |       |                              |     |       |                             |     |       |                             |       |      |   |              |       |  |              |      |  |
| 取締役                                       | 春日 勝人  | Director / Katsuhito Kasuga  |       |                            |         |       |                            |       |       |                                     |     |       |                              |     |       |                             |     |       |                             |       |      |   |              |       |  |              |      |  |
| 取締役                                       | 小島 利幸  | Director / Toshiyuki Kojima  |       |                            |         |       |                            |       |       |                                     |     |       |                              |     |       |                             |     |       |                             |       |      |   |              |       |  |              |      |  |
| 監査等委員                                     | 佐藤 淳   | Director and Member of the Audit and Supervisory Committee / Atsushi Sato              |       |                            |         |       |                            |       |       |                                     |     |       |                              |     |       |                             |     |       |                             |       |      |   |              |       |  |              |      |  |
| 監査等委員(社外取締役)                              | 山田 英雄  | External Director and Member of the Audit and Supervisory Committee / Hideo Yamada     |       |                            |         |       |                            |       |       |                                     |     |       |                              |     |       |                             |     |       |                             |       |      |   |              |       |  |              |      |  |
| 監査等委員(社外取締役)                              | 橋本 光   | External Director and Member of the Audit and Supervisory Committee / Hikaru Hashimoto |       |                            |         |       |                            |       |       |                                     |     |       |                              |     |       |                             |     |       |                             |       |      |   |              |       |  |              |      |  |
| 取引銀行<br>Bank                              | 西日本シティ銀行 THE NISHI-NIPPON CITY BANK, LTD.<br>三菱東京UFJ銀行 The Bank of Tokyo-Mitsubishi UFJ, Ltd.<br>みずほ銀行 Mizuho Bank, Ltd.   |  |       |                            |         |       |                            |       |       |                                     |     |       |                              |     |       |                             |     |       |                             |       |      |   |              |       |  |              |      |  |
| 関連会社<br>Affiliate Company                 | CGS NORTH AMERICA INC.(CANADA)<br>CGS NORTH AMERICA, INC. (USA)<br>CGS ASIA CO.,LTD.<br>CGS ASSISTING (THAILAND) CO.,LTD.<br>Trittech International,LLC  |  |       |                            |         |       |                            |       |       |                                     |     |       |                              |     |       |                             |     |       |                             |       |      |   |              |       |  |              |      |  |
| IRコンタクト先<br>Inquiries                     | 管理部 Administrative Department Email cgs_ir@cgsys.co.jp   |  |       |                            |         |       |                            |       |       |                                     |     |       |                              |     |       |                             |     |       |                             |       |      |   |              |       |  |              |      |  |