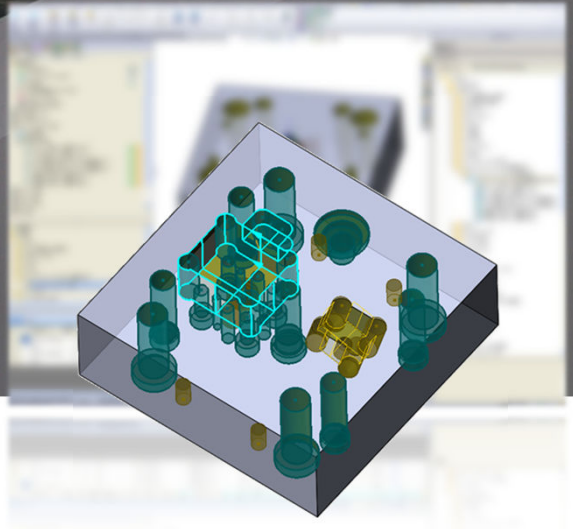
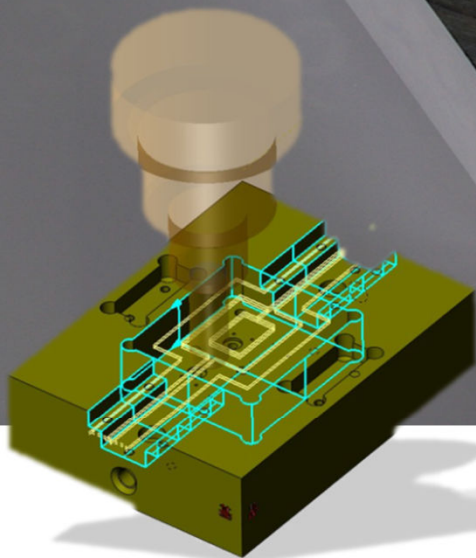


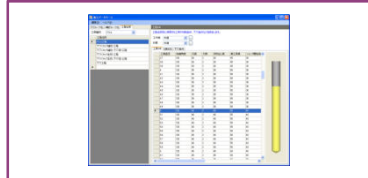
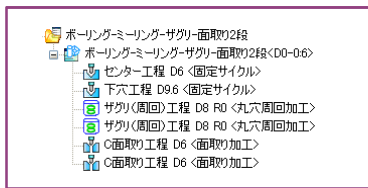
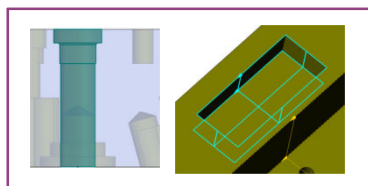
# CG CAM-TOOL

## VERSION 2

### 2.5D & HOLE Module Released



Hole and 2D machining are integrated to 3D machining project.  
2D and Hole entity, Template, Cutting DB drives CAM automation.



Cutting Entity

Template

Cutting DB

Auto Process Setting  
Auto Process Sorting

Project Tree

