

To The Press

C&G SYSTEMS INC.

Promote the Internationalization of Mold & Die Design in Asian Countries and Regions

In February, our company (President: Seiichi Shiota) will release “V3.1”, the new version (“this version”) of EXCESS-HYBRID II, the 2D/3D hybrid type CAD/CAM system for molds & dies.

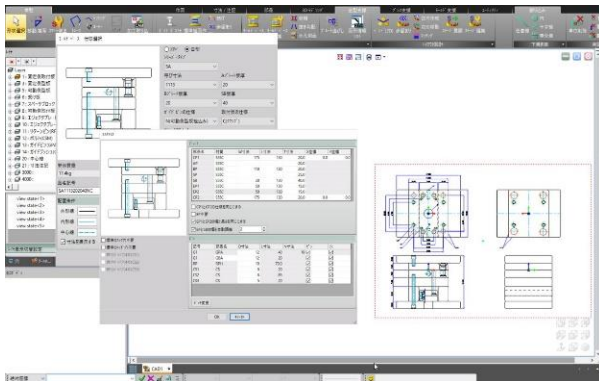
(1) Internationalization of Mold & Die Drawing Annotations

This version corresponds to “Unicode”, the standardized character code which accommodates the world’s major languages. This allowed Japanese, Korean, Chinese, and Taiwanese to intermingle in mold & die design drawings, guaranteeing the compatibility of drawing annotations in Asian countries and regions including English speaking ones. Especially in such ASEAN countries like Thailand, Indonesia, and Philippines, where the need for progressive dies that manufacture automobile-related parts are on the increase, so communication and technology sharing will be promoted. As the mold & die drawings created by the current version will automatically be converted into “Unicode” by the new version, the drawings assets that has been accumulated so far are guaranteed to be secured as well.

Our company has targeted mainly Japanese companies so far; but with the introduction of the new version, we will promote the internationalization of mold & die drawings in Asian countries and regions such as ASEAN countries where more mold & die manufacturing, locally, is being promoted to improve productivity and efficiency.



(2) Cooperation with Mold & Die Components Suppliers



In addition to the mold base manufactured by Futaba Corporation, we have newly developed the drawing function for the mold base manufactured by JAPAN MOLD STEEL CO., LTD. (Nikkei mold base) Mold base is a group of parts creating the outer structure of a plastic injection mold. By developing the shape, size, etc. on the screen, it can instantly make the detailed drawings of the mold base. The drawing

function for “Nikkei mold base” possesses the ability to customize the size and material of a specific part. In addition, it makes the special orders of component parts of molds & dies and plans for any in-house manufacturing easier.

(3) Enhancement of the Functions Specialized for Molds & Dies

In the design work of Press Dies and Injection Molds, Excess Hybrid II further improves the efficiency of designing with intuitive operation as “hybrid design” that makes 3D modeling and 2D construction seamlessly. 35 functions have been developed to be used specifically in mold & die design, including improvements of various optional functions, the enhancement of surface modeling and CAM functions.

[Product Prices] (All prices below are in Japanese Yen.)

¥600,000 - Minimum Module Configuration

*Taxes and the maintenance fees are excluded.

*The price depends on the module configuration.

[Annual Sales Target]

330 licenses * Including all option modules.

[Company Information]

- Foundation: July 2, 2007

- Capital: ¥500,000,000-

- Description of Business: Development/Sales/Support of CAD/CAM System for Mold & Die,
Production Management Systems

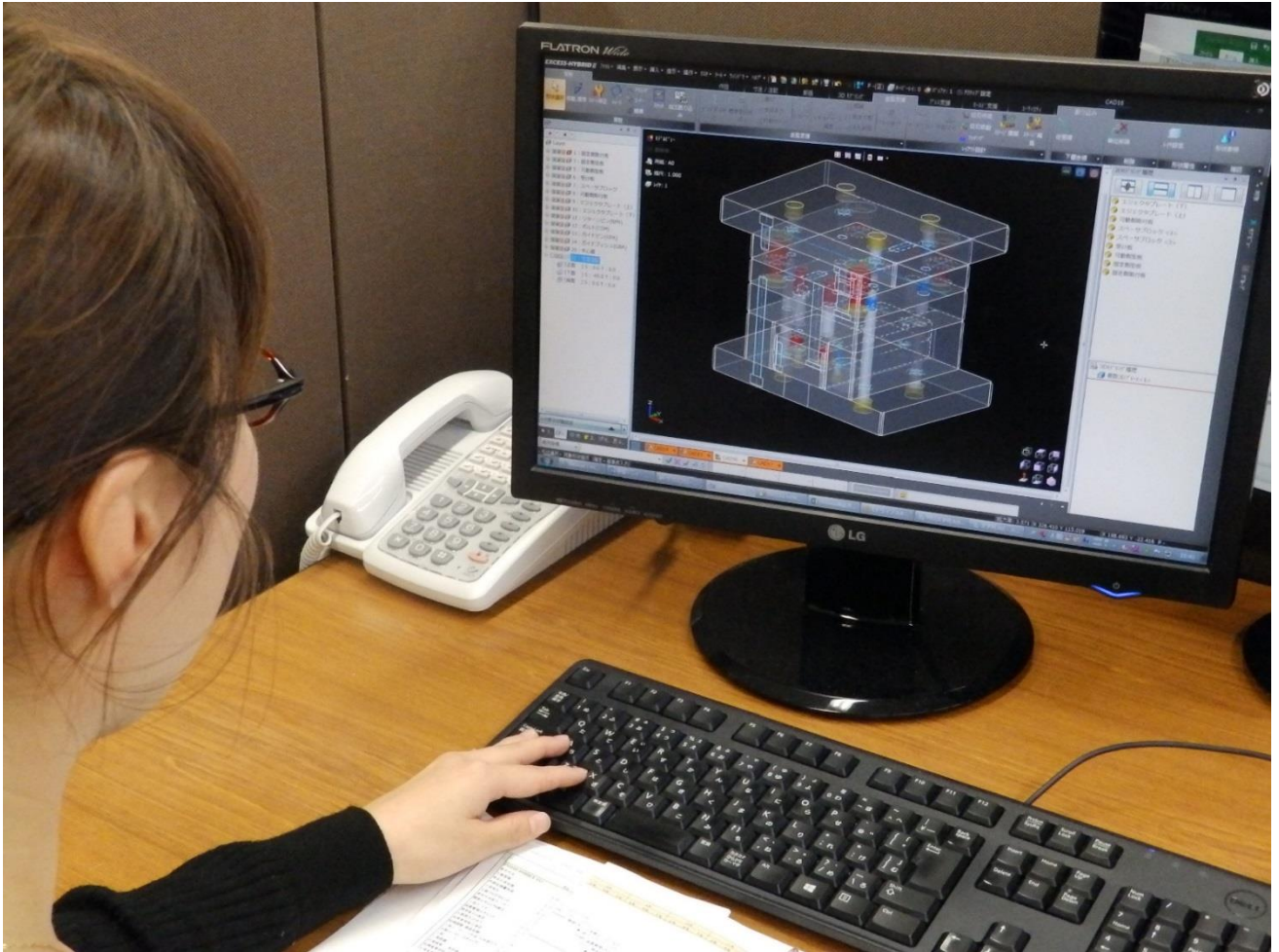
Our company is a CAD/CAM solution developer founded in 2010 as the result of a business integration and merger with Computer Engineering (founded in 1978) and Graphic Products (founded in 1981). Both of the 2 companies had more than a 30-year history, and we now have about 6,000 domestic customers and about 1,000 overseas customers.

Questions and Inquiries

Mr. Tatsuya Izawa, Public Relations, C&G Systems INC.

Tokyo Headquarters (Shinagawa-ku, Tokyo)
Kitakyushu Headquarters (Kitakyushu-city, Fukuoka)

E-mail: cgs_pr@cgsys.co.jp <http://www.cgsys.co.jp/en/>



The Image of How to Use EXCESS-HYBRID II